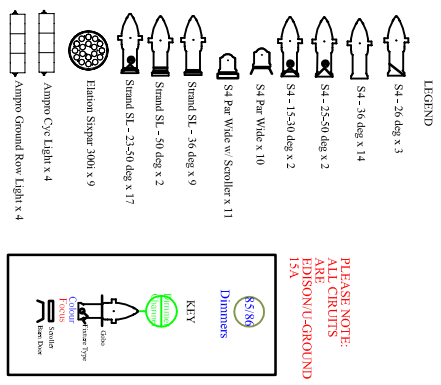
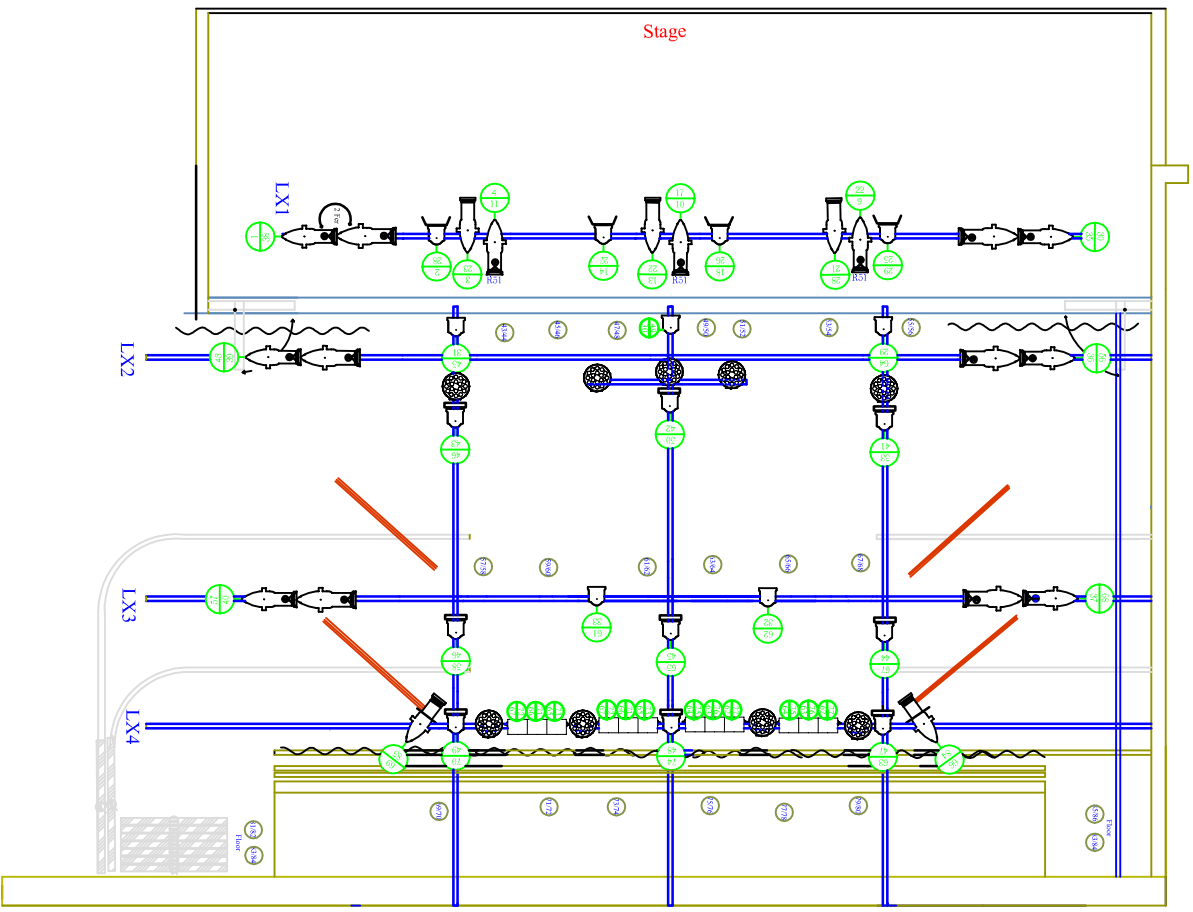
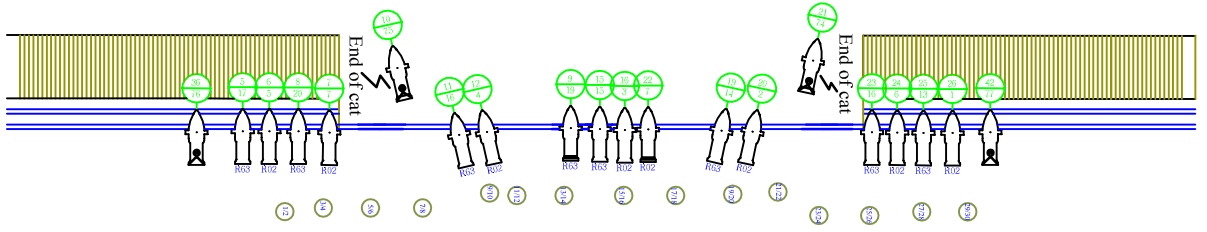
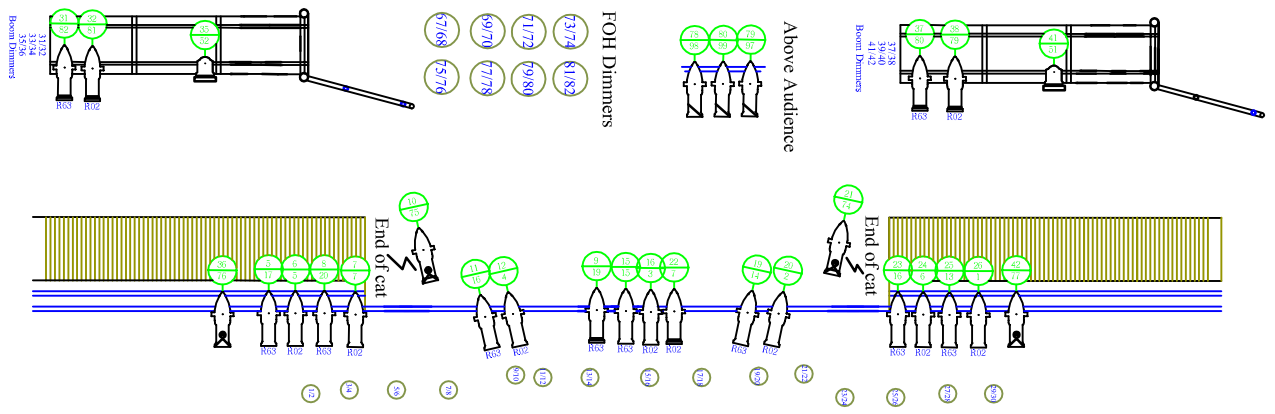


Al Green Theatre

LX and Stage Paperwork

Nov 2018

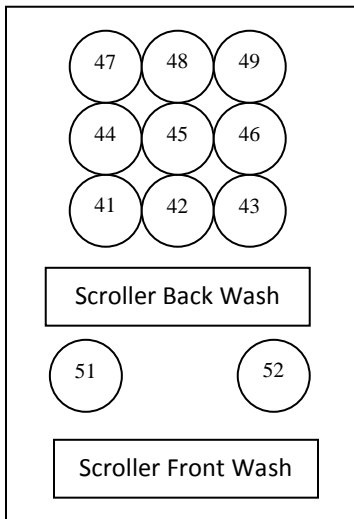
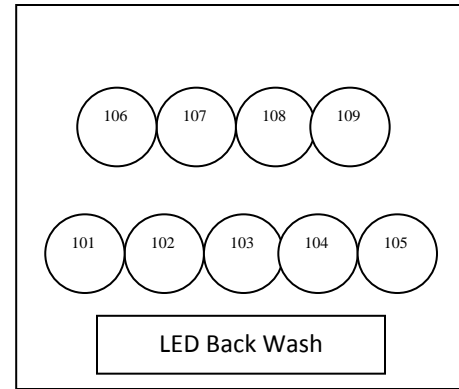
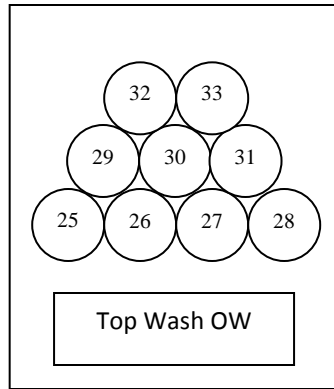
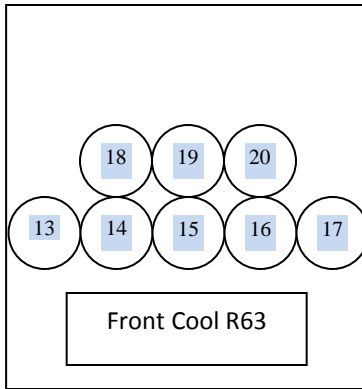
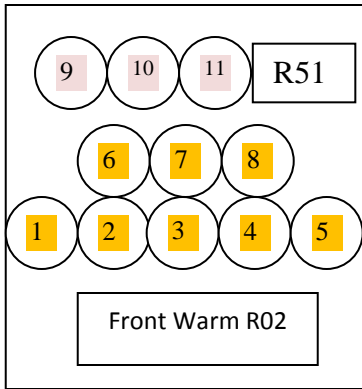


PLEASE NOTE:
ALL CIRCUITS ARE EDISON(U)-GROUND 15A

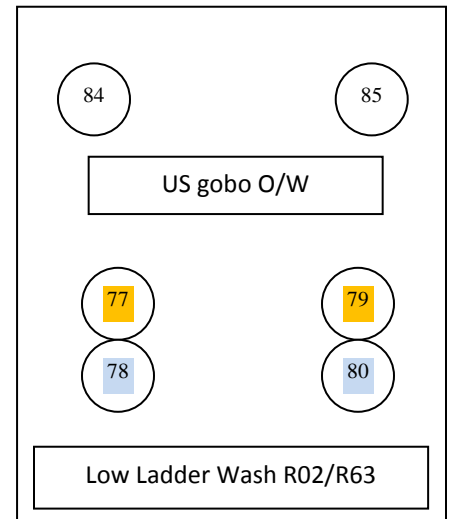
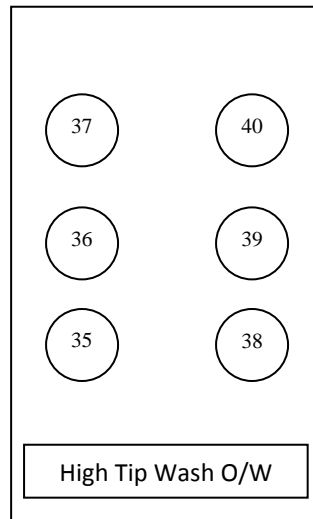
Al Green Theatre LX Plot	
Drafted by: Peter F	11/01/18
1/4" = 1'	
1/1	

AGT Al Green Theatre

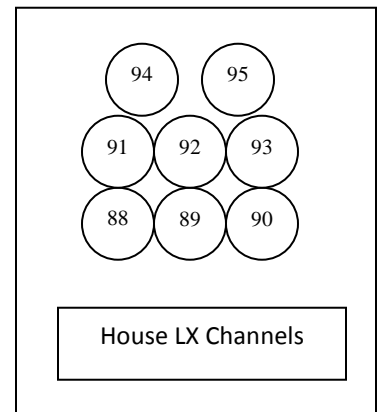
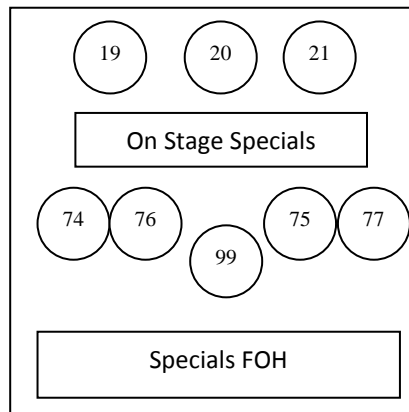
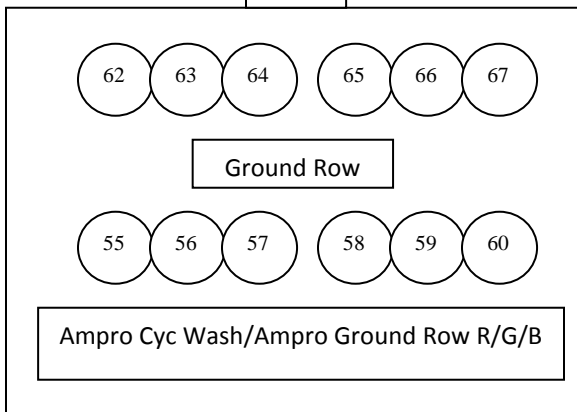
Magic Sheet
Oct 2018



- Scroller Colours
- O/W
 - Yellow
 - Pale Pink
 - Deep Pink
 - Dark Amber
 - Red
 - Light Lavender
 - Hot Pink
 - Blue
 - Dark Blue
 - Pale Green
 - Ocean Blue
 - Yellow Green
 - Aquamarine



Cyc



Chan	Dim	Fixture	Watt	Location	Purpose	Colour	Notes		
1	26	Source 4 36 degree	575w	FOH Catwalk	DS Warm	R02	<u>Spare Dimmers</u>		
2	20	Source 4 36 degree	575w	FOH Catwalk	DS Warm	R02	33, 39 - FOH Ladders		
3	16	Source 4 36 degree	575w	FOH Catwalk	DS Warm	R02	34, 40 - LX 1		
4	12	Source 4 36 degree	575w	FOH Catwalk	DS Warm	R02	54 - Above LX 2		
5	6	Source 4 36 degree	575w	FOH Catwalk	DS Warm	R02	59, 60 - Above LX 3		
6	24	Source 4 36 degree	575w	FOH Catwalk	MS Warm	R02	NOTE: ALL DIMMERS ARE 1.8k/15A EDISON/U-GROUND		
7	22	Strand SL 36 degree	575w	FOH Catwalk	MS Warm	R02			
8	7	Source 4 36 degree	575w	FOH Catwalk	MS Warm	R02	<u>Spare Fixtures</u>		
9	22	Strand SL 23-50 degree	575w	LX 1	US Warm	R51	Strand SL 26deg x 3		
10	17	Strand SL 23-50 degree	575w	LX 1	US Warm	R51	Strand SL 36deg x 2		
11	4	Strand SL 23-50 degree	575w	LX 1	US Warm	R51	S4 26deg x 1		
12							S4 36deg x 1		
13	25	Source 4 36 degree	575w	FOH Catwalk	DS Cool	R63	S4 25-50deg zoom x 2		
14	19	Source 4 36 degree	575w	FOH Catwalk	DS Cool	R63			
15	15	Source 4 36 degree	575w	FOH Catwalk	DS Cool	R63			
16	11	Source 4 36 degree	575w	FOH Catwalk	DS Cool	R63			
17	5	Source 4 36 degree	575w	FOH Catwalk	DS Cool	R63			
18	23	Source 4 36 degree	575w	FOH Catwalk	MS Cool	R63			
19	9	Strand SL 36 degree	575w	FOH Catwalk	MS Cool	R63			
20	8	Source 4 36 degree	575w	FOH Catwalk	MS Cool	R63			
21	28	Source 4 36 degree	575w	LX 1	US Cool	O/W	Used also as Pit Wash or Special		
22	13	Source 4 36 degree	575w	LX 1	US Cool	O/W	Used also as Pit Wash or Special		
23	3	Source 4 36 degree	575w	LX 1	US Cool	O/W	Used also as Pit Wash or Special		
24									
25	29	Source 4 Par	575w	LX 1	DS Top	O/W			
26	18	Source 4 Par	575w	LX 1	DS Top	O/W			
27	14	Source 4 Par	575w	LX 1	DS Top	O/W			
28	2	Source 4 Par	575w	LX 1	DS Top	O/W			
29	64	Source 4 Par	575w	LX 2	MS Top	O/W			
30	49	Source 4 Par	575w	LX 2	MS Top	O/W			
31	45	Source 4 Par	575w	LX 2	MS Top	O/W			
32	62	Source 4 Par	575w	LX 3	US Top	O/W			
33	61	Source 4 Par	575w	LX 3	US Top	O/W			
34									
35	30	Strand SL 23-50 degree	575w	LX 1	DSL Tip Near	O/W	Two fixtures per channel near/far		
		Strand SL 23-50 degree	575w	LX 1	DSL Tip Far	O/W			
36	56	Strand SL 23-50 degree	575w	LX 2	MSL Tip Near	O/W	Two fixtures per channel near/far		
		Strand SL 23-50 degree	575w	LX 2	MSL Tip Far	O/W			

37	68	Strand SL 23-50 degree	575w	LX 3	USL Tip Near	O/W	Two fixtures per channel near/far		
		Strand SL 23-50 degree	575w	LX 3	USL Tip Far	O/W			
38	1	Strand SL 23-50 degree	575w	LX 1	DSL Tip Near	O/W	Two fixtures per channel near/far		
		Strand SL 23-50 degree	575w	LX 1	DSL Tip Far	O/W			
39	43	Strand SL 23-50 degree	575w	LX 2	MSL Tip Near	O/W	Two fixtures per channel near/far		
		Strand SL 23-50 degree	575w	LX 2	MSL Tip Far	O/W			
40	57	Strand SL 23-50 degree	575w	LX 3	USL Tip Near	O/W	Two fixtures per channel near/far		
		Strand SL 23-50 degree	575w	LX 3	USL Tip Far	O/W			
Chan	Dim	Fixture	Watt	Location	Purpose	Colour	Notes		
41	53	Source 4 Par	575w	LX 2	DS Back	Scroller	111		
42	50	Source 4 Par	575w	LX 2	DS Back	Scroller	102		
43	46	Source 4 Par	575w	LX 2	DS Back	Scroller	106		
44	67	Source 4 Par	575w	LX 3	MS Back	Scroller	103		
45	65	Source 4 Par	575w	LX 3	MS Back	Scroller	108		
46	58	Source 4 Par	575w	LX 3	MS Back	Scroller	101		
47	63	Source 4 Par	575w	LX 4	US Back	Scroller	109		
48	74	Source 4 Par	575w	LX 4	US Back	Scroller	110		
49	70	Source 4 Par	575w	LX 4	US Back	Scroller	107		
50									
51	41	Source 4 Par	575w	FOH SL Ladder	DSC Front Fill	Scroller	105		
52	35	Source 4 Par	575w	FOH SR Ladder	DSC Front Fill	Scroller	112		
53									
54									
55	85	Ampro ground row	500w	Floor	CYC	R124	NOTE: Dimmers are variable 81-86		
56	84	Ampro ground row	500w	Floor	CYC	R125			
57	86	Ampro ground row	500w	Floor	CYC	R126			
58	82	Ampro ground row	500w	Floor	CYC	R124			
59	83	Ampro ground row	500w	Floor	CYC	R125			
60	81	Ampro ground row	500w	Floor	CYC	R126			
61									
62	77	Ampro Cyc Light	500w	LX 4	CYC	R124			
63	75	Ampro Cyc Light	500w	LX 4	CYC	R125			
64	76	Ampro Cyc Light	500w	LX 4	CYC	R126			
65	73	Ampro Cyc Light	500w	LX 4	CYC	R124			
66	72	Ampro Cyc Light	500w	LX 4	CYC	R125			
67	71	Ampro Cyc Light	500w	LX 4	CYC	R126			
68									
69	51	Source 4 Par	575w	DSR Floor	Low Side Shin	O/W	By Request		
70	52	Source 4 Par	575w	MSR Floor	Low Side Shin	O/W	By Request		

71	47	Source 4 Par	575w	DSL Floor	Low Side Shin	O/W	By Request		
72	48	Source 4 Par	575w	MSL Floor	Low Side Shin	O/W	By Request		
73									
74	21	Source 4 15-30 degree	575w	FOH Catwalk	Special	O/W			
75	10	Source 4 15-30 degree	575w	FOH Catwalk	Special	O/W			
76	36	Source 4 30-50 degree	575w	FOH Catwalk	Special	O/W			
77	42	Source 4 30-50 degree	575w	FOH Catwalk	Special	O/W			
78									
Chan	Dim	Fixture	Watt	Location	Purpose	Colour	Notes		
79	38	Strand SL 36 degree	575w	HL Ladder	DSC Front Fill	R02			
80	37	Strand SL 36 degree	575w	HL Ladder	DSC Front Fill	R63			
81	32	Strand SL 36 degree	575w	HR Ladder	DSC Front Fill	R02			
82	31	Strand SL 36 degree	575w	HR Ladder	DSC Front Fill	R63			
83									
84	66	Source 4 25-50 degree	575w	LX 4	US Gobo	O/W			
85	69	Source 4 25-50 degree	575w	LX 4	US Gobo	O/W			
86									
87									
88	88	House Light			Peanut				
89	89	House Light			Peanut				
90	90	House Light			Peanut				
91	91	House Light			Stage				
92	92	House Light			Orchestra				
93	93	House Light			Side House				
94	94	House Light			Back House				
95	95	House Light			Scoops				
96									
97	79	Source 4 26 degree	575w	Above Audience	HL Pit Fill				
98	78	Source 4 26 degree	575w	Above Audience	HR Pit Fill				
99	80	Source 4 36 degree	575w	Above Audience	DS Special				
100									
101 - 109	300-371	Elation SixPar 300i	216w		LED Back wash		See additional page		
120	199	Hazer							

